

NWC Karcher & Middleton

Multi Tenant Building Available



* Illustrative Photo

Building Details

- 7,250 SF multi-tenant building available for lease.
- Space is divisible according to Tenants needs.
- “Grey Shell” delivery unless requested otherwise.
- End cap unit with Drive-Thru option available.

Property Details

- 40,000+ VPD !
- Signalized corner with 6 lanes of traffic at the intersection.
- Located on the “going home” side of the street.
- Several access points to development.
- Zoned Business Commercial.
- Less than 1 mile from Nampa’s retail hub which includes the Home Depot, the Karcher Mall, WinCo, Jack In The Box, Lowe’s, and more.

Description

Rocky Mountain Companies is proud to develop the newest commercial subdivision at one of the busiest intersections in Nampa with tremendous nearby rooftop growth. Nampa’s population (106,000) has doubled since 2000. And by 2040, COMPASS expects it to rise to 150,000+.

Nampa offers some of the most affordable residential property in the Boise Valley. More rooftops means more demand for goods & services.

Demographics

	1 mi.	2 mi.	3 mi.
Pop	8,211	25,529	55,656
Avg HH Income	\$48,432	\$54,790	\$55,783
Daytime Pop	9,540	27,065	54,922

Camille Lothrop
Office: 208 345 7030 ext. 212
Mobile: 208 841 0062
Camille.lothrop@rmcos.com

Ben Zamzow, CCIM SCLS
Office: 208 345 7030 ext. 214
Mobile: 208 859 5938
bmz@rmcos.com

Rocky Mountain
Real Estate Services, LLC

350 N. 9th Street, Ste 200, Boise ID 83702

www.rmcos.com

Aerial

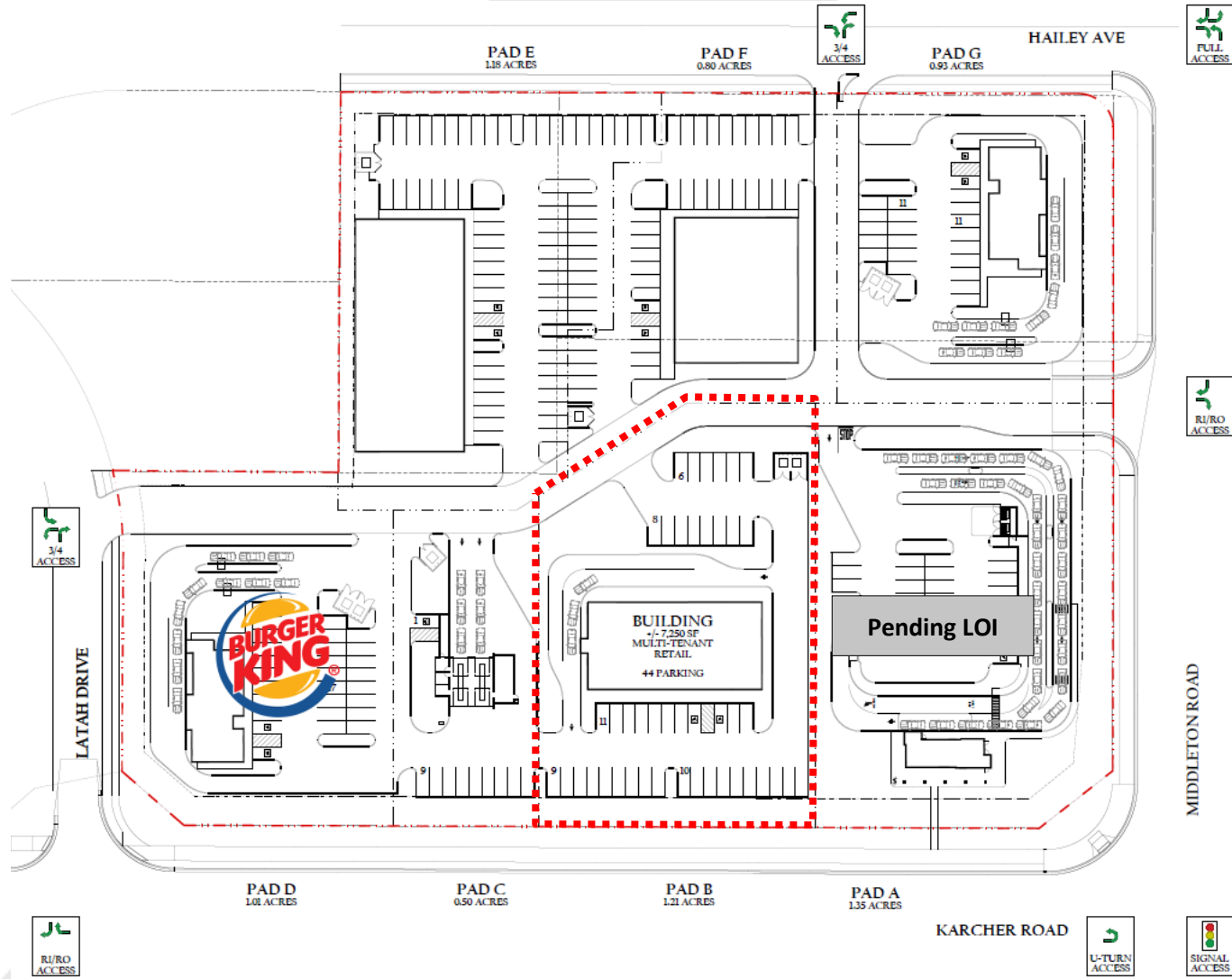


Camille Lothrop
Office: 208 345 7030 ext. 212
Mobile: 208 841 0062
Camille.lothrop@rmcos.com

Ben Zamzow, CCIM SCLS
Office: 208 345 7030 ext. 214
Mobile: 208 859 5938
bmz@rmcos.com

Rocky Mountain
Real Estate Services, LLC
350 N. 9th Street, Ste 200, Boise ID 83702

Potential Site Plan



Camille Lothrop
 Office: 208 345 7030 ext. 212
 Mobile: 208 841 0062
 Camille.lothrop@rmcos.com

Ben Zamzow, CCIM SCLS
 Office: 208 345 7030 ext. 214
 Mobile: 208 859 5938
 bmz@rmcos.com

Illustrative Building Photo



* Illustrative Photo

Camille Lothrop
Office: 208 345 7030 ext. 212
Mobile: 208 841 0062
Camille.lothrop@rmcos.com

Ben Zamzow, CCIM SCLS
Office: 208 345 7030 ext. 214
Mobile: 208 859 5938
bmz@rmcos.com

Rocky Mountain
Real Estate Services, LLC
350 N. 9th Street, Ste 200, Boise ID 83702

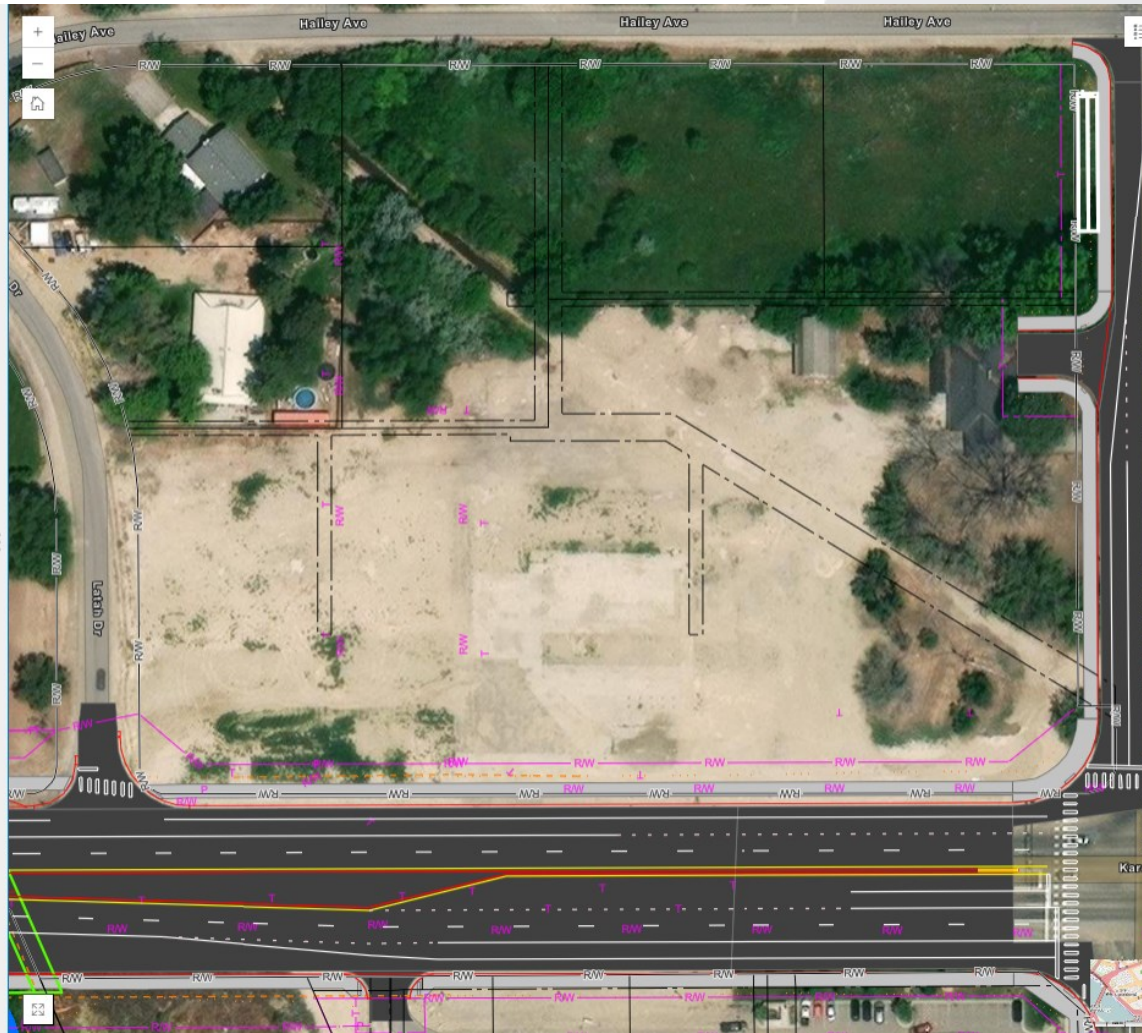
Aerial



Camille Lothrop
 Office: 208 345 7030 ext. 212
 Mobile: 208 841 0062
 Camille.lothrop@rmcos.com

Ben Zamzow, CCIM SCLS
 Office: 208 345 7030 ext. 214
 Mobile: 208 859 5938
 bmz@rmcos.com

ITD Improvements



Construction in front of our property is expected between Fall 2026 & Summer 2027.



FINAL DESIGN PLANS ARE EXPECTED TO INCLUDE:

- Widening the highway to four 12 ft. wide lanes and dedicated left turn lanes at major intersections.
- Widening shoulders to 8 feet.
- Adding a raised median and right-in-right-out turns throughout the corridor.
- Adding a 10-foot bicycle and pedestrian pathway on the north and south sides of SH-55.
- Upgrading signal equipment at existing signalized intersections.
- Adding sound walls in select locations.
- Adding a frontage road near 10th Ave on the north side of the highway.

SCHEDULE

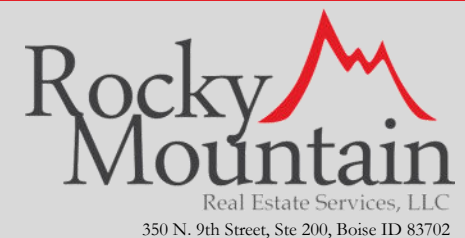
Completed SH-55, Pear Lane to Middleton Road Study. Identified the area in most need of safety and capacity improvements (Farmway Road to Middleton Road).	Early 2022
Developed design plans and gathered public input on improvements to SH-55 from Farmway Road to Middleton Road.	Summer 2022
Present revised design plans to the public for review.	Summer 2023
Finish purchasing right-of-way.	Early 2024
Begin construction.	2024

FOR MORE INFORMATION

VISIT itdprojects.org/state-highway-55-farmway-to-middleton-road/
 EMAIL info@55farmwaytomiddleton.org PHONE 208-477-1379

Camille Lothrop
 Office: 208 345 7030 ext. 212
 Mobile: 208 841 0062
Camille.lothrop@rmcos.com

Ben Zamzow, CCIM SCLS
 Office: 208 345 7030 ext. 214
 Mobile: 208 859 5938
bmz@rmcos.com



New Residential Developments



Camille Lothrop
Office: 208 345 7030 ext. 212
Mobile: 208 841 0062
Camille.lothrop@rmcos.com

Ben Zamzow, CCIM SCLS
Office: 208 345 7030 ext. 214
Mobile: 208 859 5938
bmz@rmcos.com